



IMPROVING LEARNING OUTCOMES

THROUGH MEASUREMENT OF LEARNING

CURRENT SCENARIO



HOW TO GIVE THE BEST TO EVERY STUDENT



STUDENT

Exposure to a range of learning inputs: **Teachers, Tutors, Environment & Society, Textbooks** and **Internet**
(including internet)



PARENT

Gets periodic **performance updates** through **grade cards**



TEACHER

Handles **large student batches** with differing **learning styles, ability** and **background**



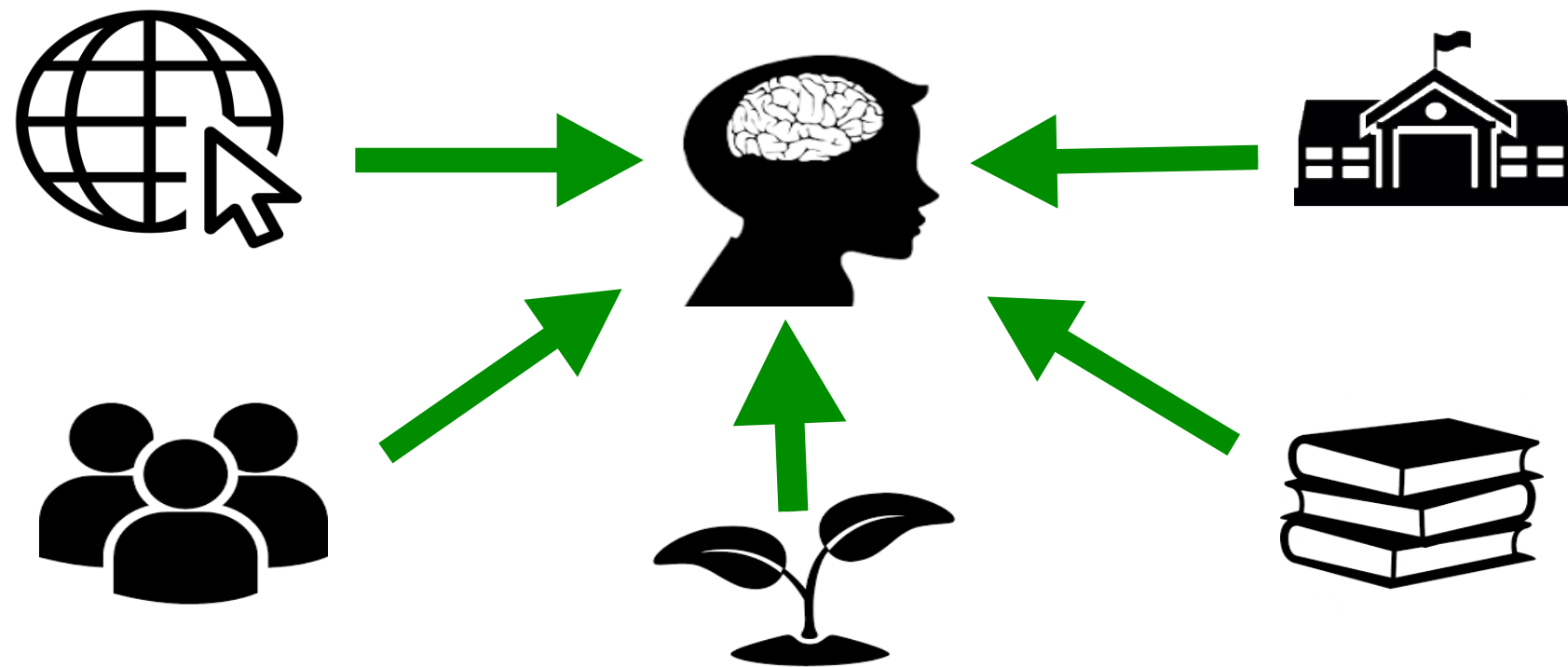
SCHOOL

Makes substantial **investment** into **classrooms, resources, teachers, field trips, technology**

However, what is missing is



**COLLECTING
EDUCATION DATA**



Students are getting information from all the dimensions, but do not know how to channelize. Hence we propose a solution.

PROPOSED SOLUTION

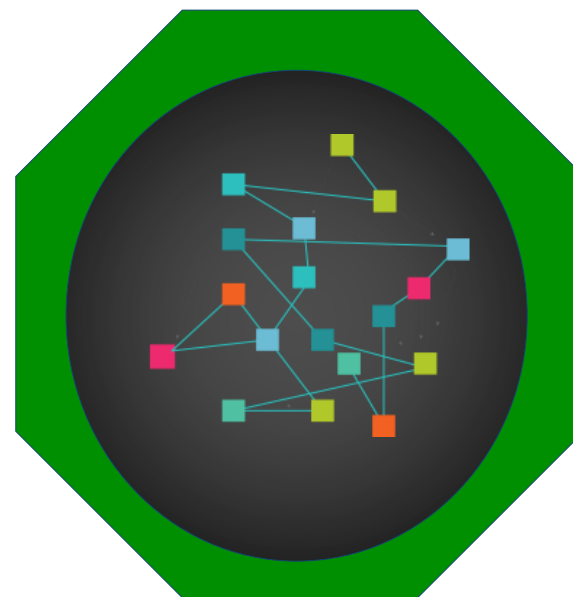


COLLECTING EDUCATION DATA



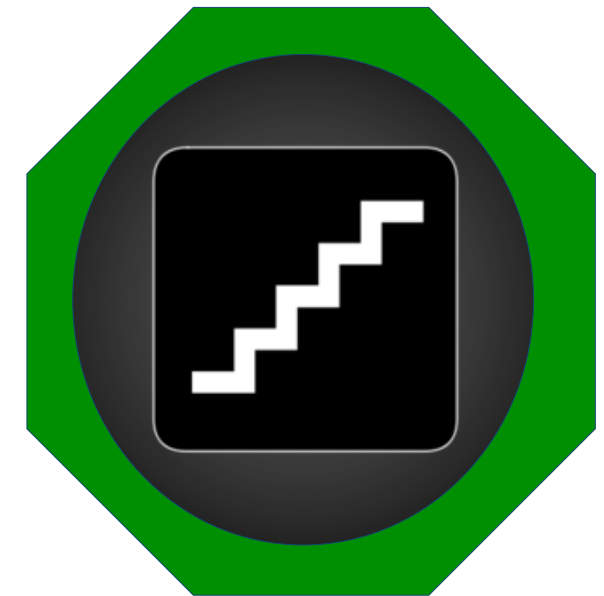
NEURAL KNOWLEDGE POINTS

Fragmenting entire curriculum into atomic unit of **Learning Concept**



ADAPTIVE LEARNING CURVE

Learning Pattern identification, and correction of specific **knowledge gaps** through **Learning Resources**



PROGRESSIVE LEARNING LEVELS

Platform learning through successive **stages** of **Learn, Practice & Mastery**

PROPOSED SOLUTION



PROGRESSIVE LEARNING LEVELS

THREE STAGES OF MASTERY

Mastery: Medium to Challenging, Understanding and Application

Lx –
Beyond 100

Lx = 40



Lx = 100

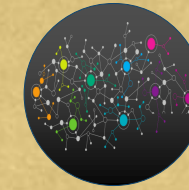
Practice: Assisted, Medium to Challenging, Knowledge, Understanding and Application



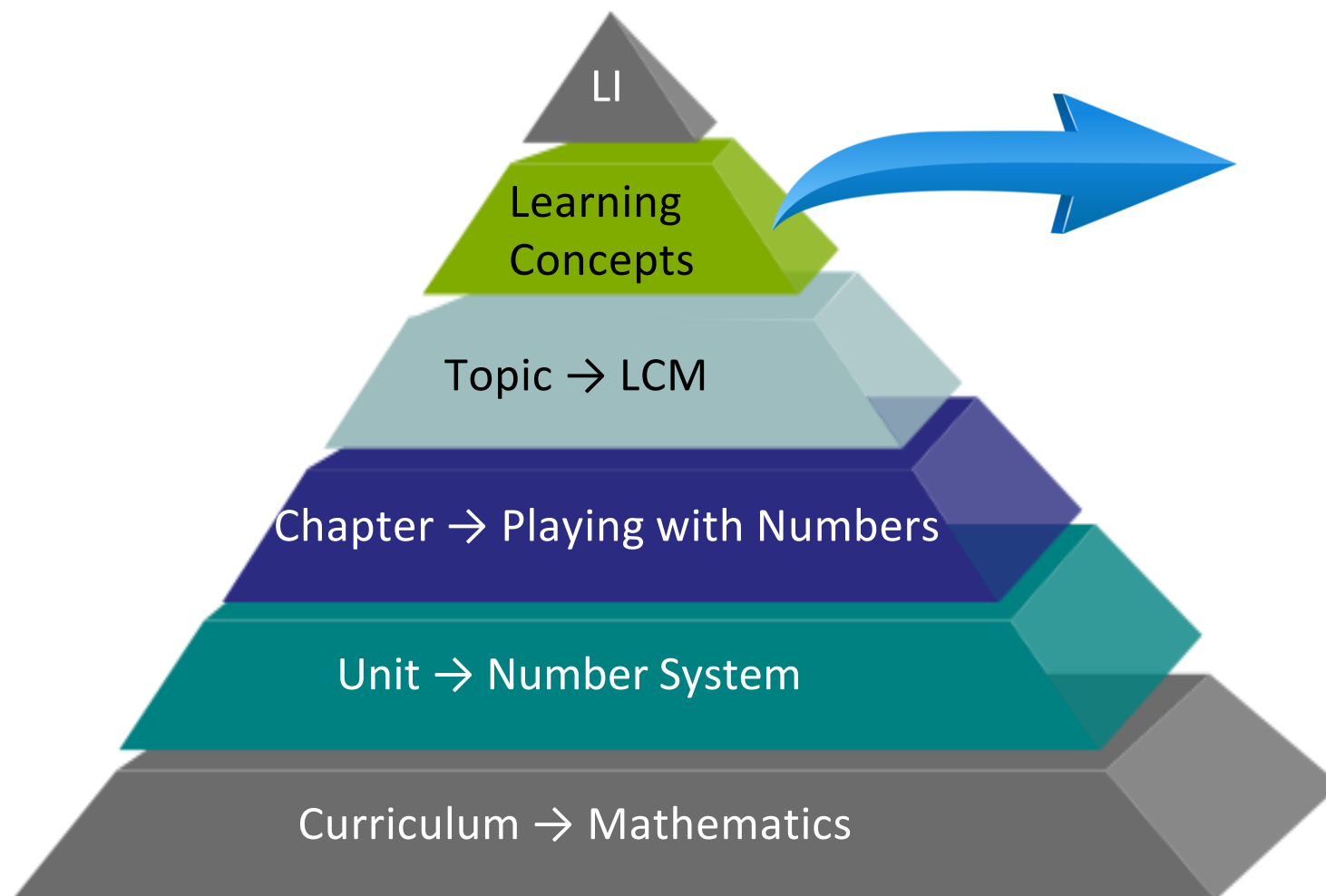
Learn: Aided, Easy to Medium, Knowledge and Understanding



PROPOSED SOLUTION



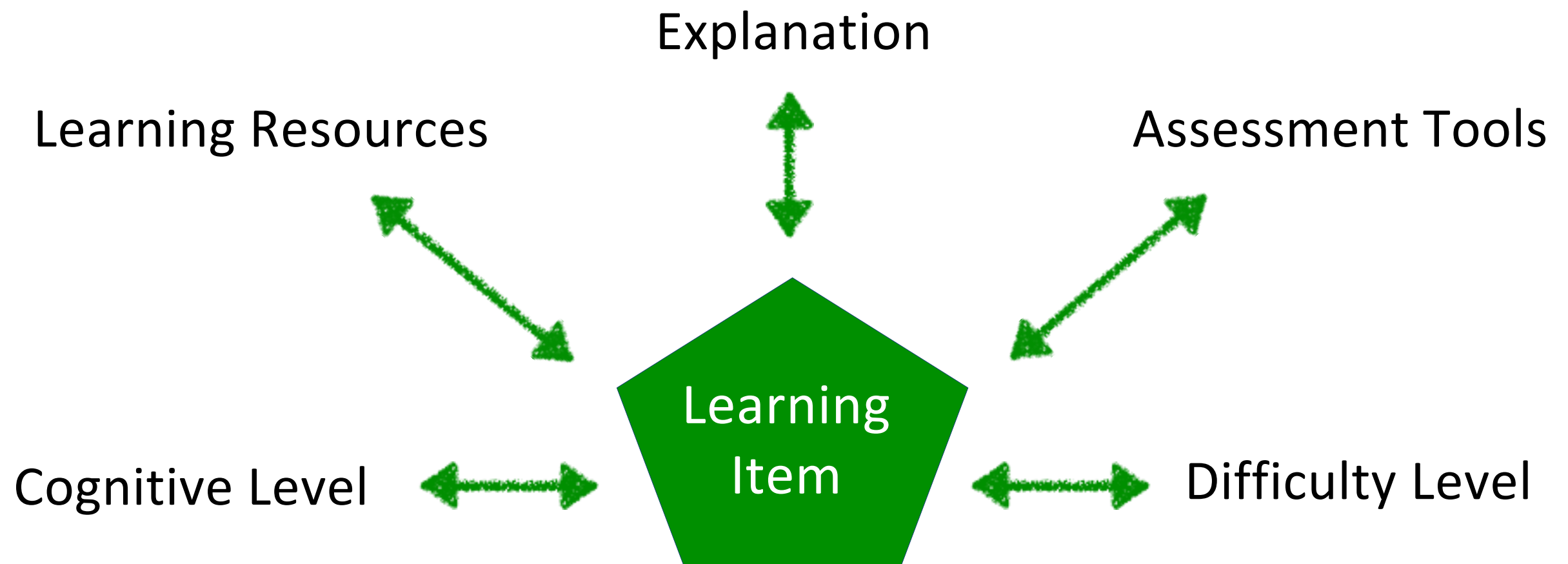
NEURAL KNOWLEDGE POINTS



- *LCM of two numbers*
- *LCM of three Numbers*
- *LCM of two fractions (with same denominator)*
- *LCM of more than two fraction (with same denominator)*
- *LCM of two fractions (with different denominator)*
- *LCM of more than two fraction (with different denominator)*
- *World problems on LCM*
- *Real Life World problems on LCM*

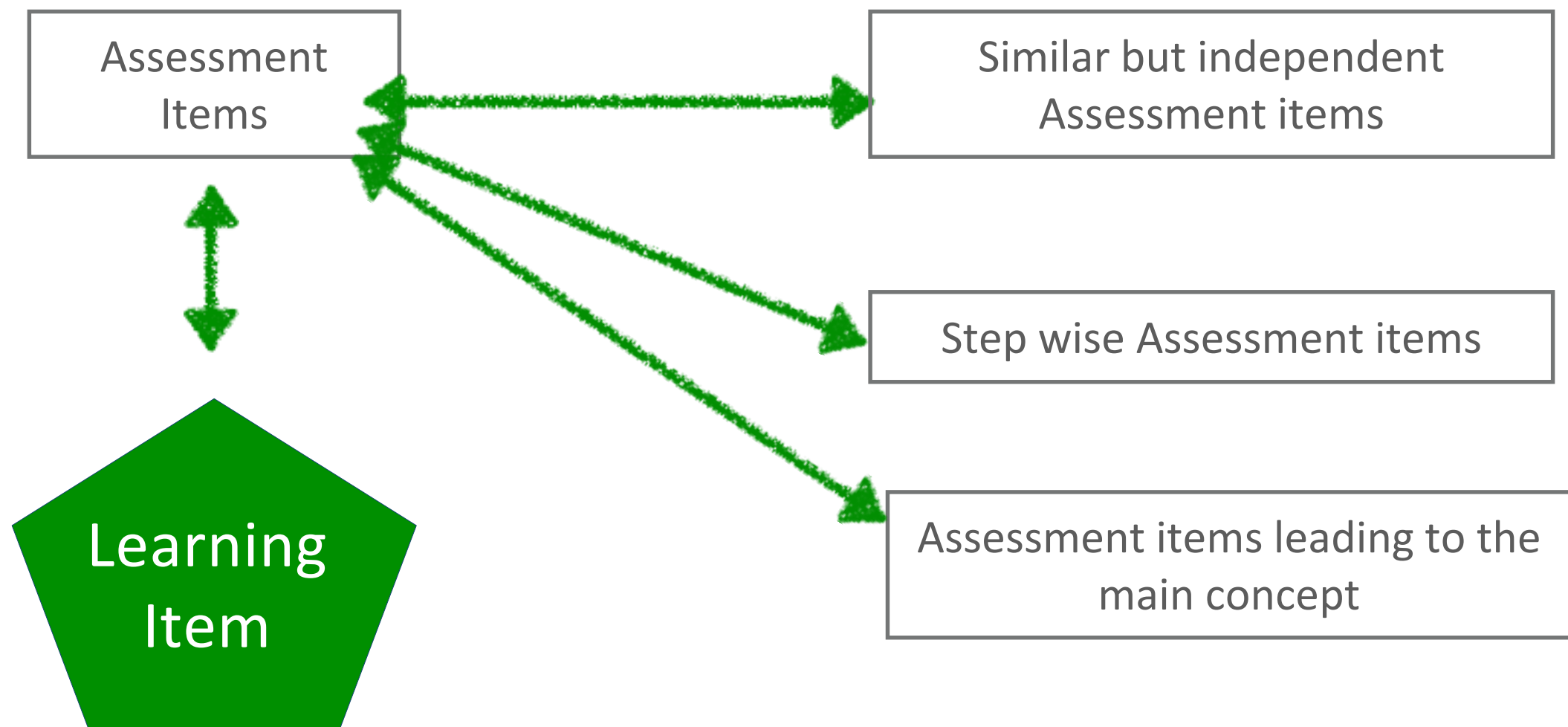
LEARNING ITEM

A **learning item** is designed as "a collection of **content items**, **practice items**, and **assessment items** that are combined based on a single learning objective



LEARNING ITEM

A **learning item** is designed as "a collection of **content items**, **practice items**, and **assessment items** that are combined based on a single learning objective



LEARNING INDEX VS GRADE CARD



LEARNING INDEX

Cause

Proactive

Measures what has been learnt



GRADE CARD

Result

Reactive

Measures what has been taught



REVISED SCENARIO



HELP A STUDENT DISCOVER HIS POTENTIAL



STUDENT

Enhanced focus with clear understanding of gaps. Timely and relevant inputs from teachers and parents.



PARENT

Participate in learning process by guiding on specific learning gaps.



TEACHER

Address specific learning gaps in classroom, design of teaching strategies, share relevant resources.



SCHOOL

Curriculum design, teaching strategies, measure effectiveness, resource allocation, pedagogy design.



Transparency

Availability

Flexibility

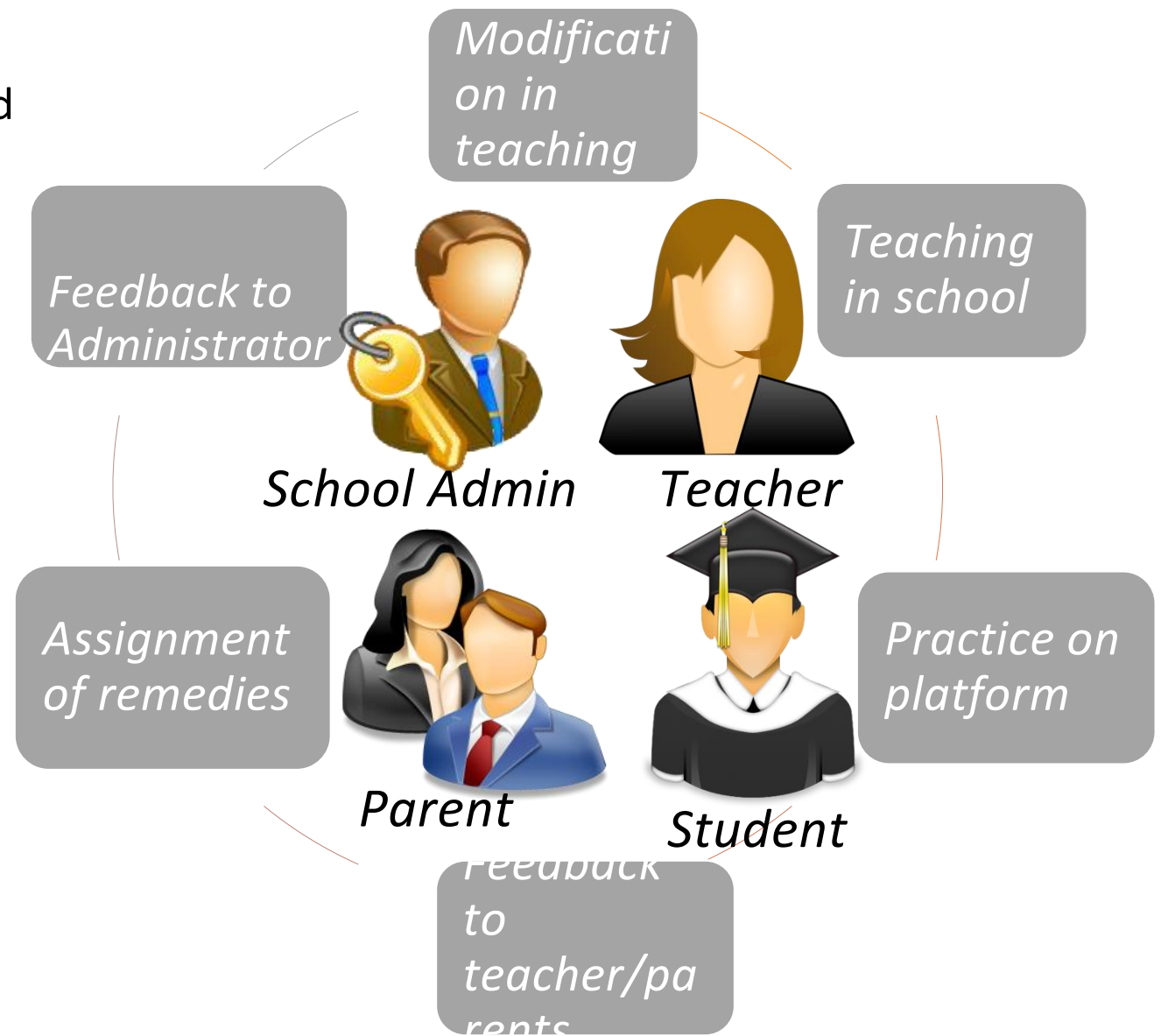


DASHBOARD

- ▶ Universal management portal
- ▶ Management of document, links and academic repository
- ▶ Organise: Agenda and announcements
- ▶ Supervision of users and statistics
- ▶ Social Media Engine

CLOUD SUPPORT

- ▶ Lightning Service & Support
- ▶ Coordinate group work
- ▶ Content syncing
- ▶ Portability
- ▶ Maintainability



REPORTS



STUDENT REPORTS

- Learning Report
- Assessment/Test Report

TEACHER REPORTS

- Individual Test Zone wise report
- Class/Individual student learning performance report
- Class/Individual student test performance report



THANK YOU